

Centralized Fusion Monitoring Center

Empowering Insight, Ensuring Security





PertSol is a leading Telecom and IT solution provider for Telecom/ Internet Service Providers, Government and Law Enforcement Agencies providing explicit offering of capabilities starting with specialized solutions, customized software applications, professional and project management services with dedicated cross functional agile teams.

Our solutions have been shaped by our deep domain knowledge, built by harnessing our strength in next generation technologies across Telecom Regulatory Compliance Management, Telecom Core Network, Emergency Response System, Big Data Analytics & Internet of Things (IoT). Backed by our superior delivery experience with a key focus on quality.

9+ YEARS OF OPERATIONS

60+ R&D EXPERTS

25+ FUTURE READY SOLUTIONS

60+ PROJECTS DELIVERED

65+ HAPPY CLIENTS

23+ LOCATIONS WORLDWIDE

Introduction

In an ever-evolving global landscape marked by geopolitical shifts, technological advancements, and asymmetric challenges, National security is the paramount concern of any sovereign nation. These shifts encompass not only traditional military defence but also a wide array of dimensions, including cybersecurity, economic stability, environmental sustainability, and social cohesion. As we navigate an era defined by rapid technological advancements, global interconnectivity, and emerging threats that transcend traditional boundaries, the need a unified and adaptive security infrastructure has never been more pressing.

At PertSol, we deeply recognize the paramount significance of national security. To detect and effectively counter threats to our nation's security, PertSol introduces its comprehensive solution, "Centralized Fusion Monitoring Center." This state-of-the-art system has been meticulously designed to assist government entities, law enforcement agencies, and other national security organizations. Our Centralized Fusion Monitoring Center offers an array of critical features, including a Target Based Lawful Interception System, Mass Metadata Interception & Analysis, a Location Intelligence Platform, DPI-Based Inline Traffic Management, and a Location-Based Mass Alert System. Together, these components empower security agencies to uncover patterns and identify individuals of interest, facilitating further investigations and actions, intercepting the target information of an illicit person, URL/IP based blocking of offensive websites or videos, retrieve more accurate location of the distress caller & also alerting masses in times of emergencies.

Centralized Fusion Monitoring Center for Mission-Driven Teams



**Government
Agencies**



Defence



**Law Enforcement
Agencies**



**Intelligence
Community**

Centralized Fusion Monitoring Center

PertSol's "Centralized Fusion Monitoring Center" provides a robust, adaptable, and compliant framework for safeguarding national interests and ensuring the safety & security of citizens. It represents a forward-looking approach to national security, leveraging technology and intelligence to address the multifaceted threats of the modern world. This integrated suite is a culmination of extensive research, innovation, and a steadfast commitment to fortify national security. Below, we present an overview of PertSol's National Security Solution, a dynamic framework that comprises the following key components:

Target Based Lawful Interception

By unifying the capabilities of lawful interception & real-time monitoring, this solution offers a comprehensive approach to address the evolving challenges of national security, criminal investigations, and public safety. The system can monitor any suspected individual & provide insights related to complete communication details. This in turn support LEA's to gather required evidences for a lawful action against the individual before the damage is being done. The system supports both active & passive interception.

Mass Metadata Interception & Analytics

PertSol mass metadata interception & Analytics platform is designed to harness the power of metadata for comprehensive surveillance and threat detection. Our solution is a robust & scalable IPDR & xDR solution, capable to generate layer 2-7 IPDR records by passively tapping telecom/ internet POP/ Gateways & perform advances analytics to generate actionable intelligence.

Location Intelligence Platform

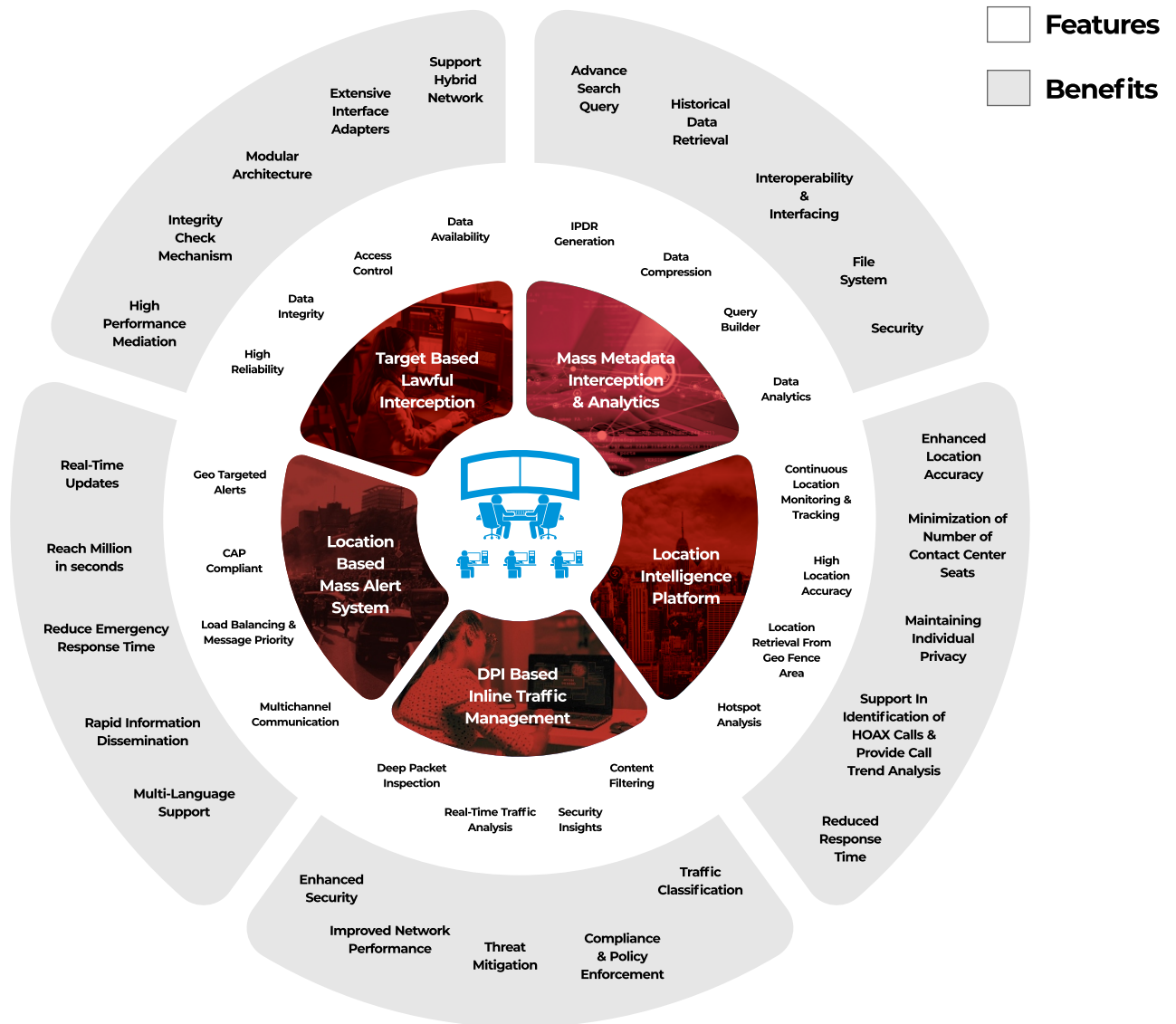
Our Centralized Location Based Services platform for detecting accurate and precise location of mobile users in real-time and, provides geo-spatial analytics. Our LBS platform comprises of various LBS modules (GMLC, SMLC, SAS, eSMLC, LMF).

DPI Based Inline Traffic Management

A sophisticated solution to analyze, control, and optimize data packets flowing through digital networks. DPI technology allows for the examination of data packets at a granular level, providing valuable insights into the content, source, destination, and purpose of network traffic. This innovative approach plays a pivotal role in network optimization, cybersecurity, and quality of service (QoS) enhancement.

Location Based Mass Alert System

Our unified location-based mass alert system disseminates vital information & alerts during emergencies to masses in real-time through multiple communication channels such as SMS, SMS-CB, voice call, TV/ Radio, social media, siren, VMS & more.



A centralized monitoring center will be a facility to monitor & analyze various types of data from multiple sources proposed like Target Based DPI Lawful interception, Mass Metadata Interception & Analytics, Location Intelligence Platform, DPI Based Inline Traffic Management & Location Based Mass Alert System to help ensure the security & safety of a nation. It stitches the information being received from the multiple sources & covert it to a valuable insight for the investigations. Monitoring center uses advanced technologies such as data analytics & machine learning to identify & respond to potential security threats. The responsibility for national security falls under the jurisdiction of Ministry of defence, Intelligence Agency, or Homeland Security. These organizations may operate the centralized monitoring centers or work collaboratively with other agencies & organizations to share information & coordinate their efforts to protect national security.

System maintains the balance between national security & individual privacy to ensure that the rights of individuals are not infringed upon unnecessarily.

Solution Use Cases



Criminal Investigations

The solution serves as a vital tool for law enforcement agencies in the investigation and prevention of criminal activities. It facilitates the collection of evidence, surveillance of communication patterns, and interception of communications pertinent to ongoing criminal investigations, such as drug trafficking, organized crime, terrorism, and financial fraud.



Public Safety & Emergency Response

The solution can enhance public safety and emergency response capabilities. During emergencies or crisis situations, it allows for the monitoring of communication channels, facilitating real-time information gathering, threat identification, and supporting emergency response and decision-making processes.



Crisis Mapping

The solution can be used to create real-time crisis maps, displaying the location of emergency incidents, resource deployment, evacuation routes, and relief efforts. It helps coordinate response efforts, allocate resources effectively, and provide timely information to responders and the public.



Counter Terrorism

The solution can aid in tracking and monitoring individuals associated with terrorist activities. By analyzing location data, security agencies can identify patterns, connections, or suspicious behaviors, enabling proactive measures to prevent potential terrorist acts.



Subscriber Behaviour Analysis

The solution enables the analysis of subscriber behavior by collecting and analyzing metadata related to communication patterns, usage habits, and service preferences. This analysis helps telecom operators gain insights into customer needs, personalize services, develop targeted marketing campaigns, and improve customer retention.

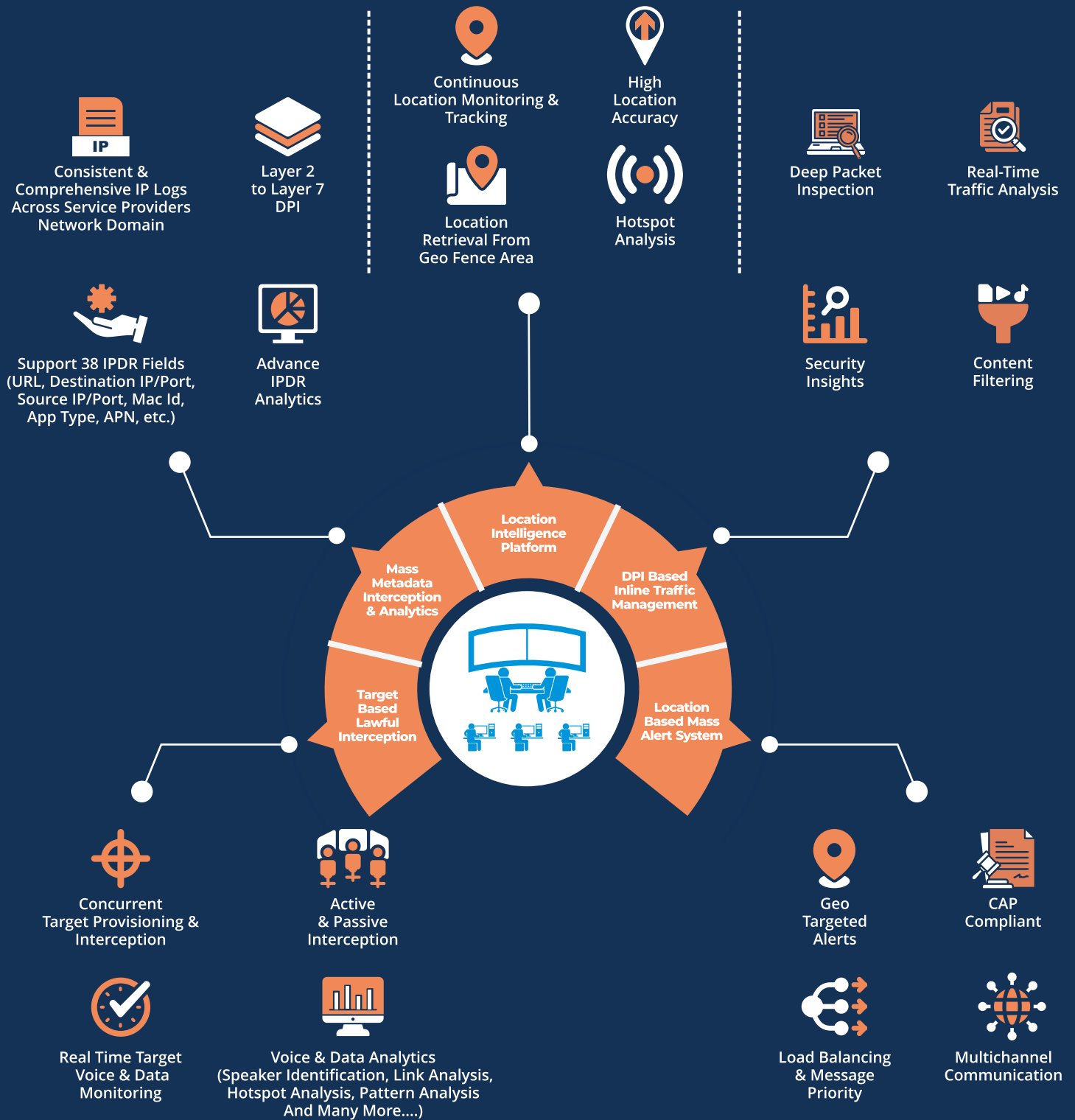


Border Security and Immigration Control

Our solution can be used to monitor & analyze border crossings and immigration-related communications, detect and intercept communications related to human trafficking or illegal immigration. This analysis will help the authorities in enhancing border surveillance and response capabilities.

KEY FEATURES

Solution With Excellent Capabilities





PertSol[®]
Simple Solutions for Complex World

Reach us at



INDIA

Corporate Office:

720 Midas Sahar Plaza, J.B. Nagar,
Andheri East, Mumbai 400059,
Maharashtra, India



+91 224 023 5503



www.pertsol.com



USA

Sales Office:

6379 Clark Ave.
Suite 260 Dublin CA 94568,
USA



contact@pertsol.com